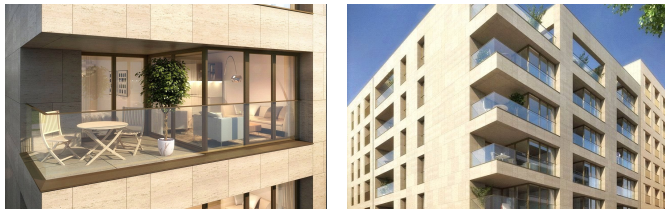


# 1 BEDROOM APARTMENT LUXEMBOURG - GASPERICH

Réf: WAERPS-LUX180086

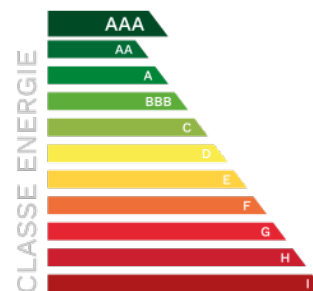


The Laurier Residence is located in the new pedestrian zone of La Cloche d'Or. It consists of 23 apartments ranging from 55.50 m<sup>2</sup> for a 1 bedroom apartment to 126 m<sup>2</sup> for a 3 bedroom apartment. The A40532 apartment is an apartment on the third floor with 1 bedroom. It has a living area of 52.24 m<sup>2</sup> (weighted area of 55.50m<sup>2</sup>) with a balcony of 4.35 m<sup>2</sup> facing south. All prices are 17% VAT included for the apartment and the cellar. The parking space is offered at the price of 65.000,00 euros including 17% VAT. As part of a purchase for principal residence, a request for application of the super reduced VAT rate to 3% will be made at the signing of the notarial deed. The refund of VAT will be made on the constructions made and those to come within the limit of 50.000,00 euros. Non-contractual images. The main surface shown is weighted.

## 528 915 €

**Area: 55m<sup>2</sup>**  
**Availability : Q3/2019**

- Apartment
- 1 Bedroom(s)
- 1 Bathroom(s)



JLL Residential  
41, Rue du Puits Romain  
L-8070 Bertange

Whether you are looking to buy, sell or rent a residential property or a piece of land in Luxembourg, our entire team of experts will be delighted to use their experience to serve you. We are committed to providing solutions personalised to your needs. Know more about JLL : [www.jll.lu](http://www.jll.lu) | [www.jll.com](http://www.jll.com)

© Copyright 2016 Jones Lang Lasalle, IP, Inc. Non-contractual document.

**NEED INFORMATION ?  
OUR TEAM OF PROFESSIONALS  
IS AT YOUR SERVICE:**

**T : (+352) 46.45.40**  
**[residential.lux@jll.com](mailto:residential.lux@jll.com)**  
**[www.jllr.lu](http://www.jllr.lu)**