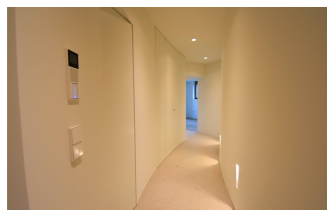


APARTMENT LUXEMBOURG - LIMPERTSBERG

Réf: WAERPS-LUX190007



3 850 €

Area: 123m²
Availability : now

- Apartment
- Unfurnished
- 2 Bedroom(s)
- 3 Bathroom(s)
- Residents Parking
- Terrace

Beautiful duplex apartment (n°3), with a living area of +/- 123 m² with large terrace of +/- 80 m², located on the ground floor + 1st basement, a brand new residence (1st occupation). On the ground floor, we find: - Hell entrance with wardrobe - Living - Open equipped kitchen - WC guests - Parental bedroom with custom cabinets and bathroom (bath, shower, toilet) private. The 1st basement, offers: - Two bedrooms - Shower room with toilet - Laundry In the price there is also included a parking space. Lease contract min. 3 years, without diplomatic clause. Possibility contract of 2 years, priced at 4.215 €, excluding charges.



JLL Residential
41, Rue du Puits Romain
L-8070 Bertange

**NEED INFORMATION ?
OUR TEAM OF PROFESSIONALS
IS AT YOUR SERVICE:**

T : (+352) 46.45.40
residential.lux@jll.com
www.jllr.lu

Whether you are looking to buy, sell or rent a residential property or a piece of land in Luxembourg, our entire team of experts will be delighted to use their experience to serve you. We are committed to providing solutions personalised to your needs. Know more about JLL : www.jll.lu | www.jll.com

© Copyright 2016 Jones Lang Lasalle, IP, Inc. Non-contractual document.