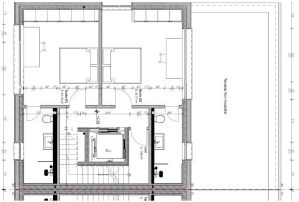


# NIEDERANVEN - 4 BEDROOM HOUSE

## NIEDERANVEN

Réf: WAERPS-LUX190066



Luxury semi-detached house of 276.82 m<sup>2</sup> with elevator, high-end finishes in a quiet street of Niederanven. The house will seduce you with its bright living room of 88.73 m<sup>2</sup> which opens onto a fully equipped kitchen (included in the price). The house offers 4 bedrooms, 3 shower rooms, 2 separate toilets and a large garage. The house has a lift, large windows overlooking the greenery, a ventilated facade and other assets. You still have the opportunity to make some changes in the plans of the house. Niederanven is a quiet and pleasant village close to the plateau of Kirchberg and Luxembourg-city. The price includes 3% TVA Les surfaces indiquées sont des surfaces utiles nettes. The agency fee are paid by the seller

# 1 680 000 €

**Area: 26m<sup>2</sup>**  
**Availability : Q2 2020**

- House
- 4 Bedroom(s)
- 3 Bathroom(s)
- Triple Garage

