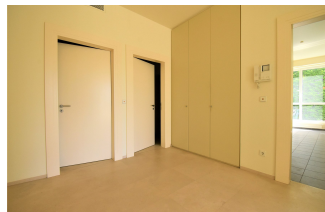


# APARTMENT LUXEMBOURG - LIMPERTSBERG

Réf: WAERPS-LUX190105



## 4 450 €

**Area: 156m<sup>2</sup>**  
**Availability : 1/8/2020**

- Apartment
- Unfurnished
- 3 Bedroom(s)
- 2 Bathroom(s)
- Residents Parking
- Terrace

Large apartment n°1, bright with a living area of +/- 156 m<sup>2</sup>, located on the ground floor, of a very well maintained and quiet residence. It is composed as follows: - Spacious entrance hall with cloakroom - Living room with terrace access of +/- 44 m<sup>2</sup> - Separate equipped kitchen - Guest WC - Night hall serving three bedrooms, one with private bathroom and an additional shower room In the basement there is also a private cellar of +/- 4.5 m<sup>2</sup> and an indoor parking. The agency costs are borne by the tenant, that is 1 month of rent + 17% VAT.



JLL Residential  
37, Rue du Puits Romain  
L-8070 Bertange

Whether you are looking to buy, sell or rent a residential property or a piece of land in Luxembourg, our entire team of experts will be delighted to use their experience to serve you. We are committed to providing solutions personalised to your needs. Know more about JLL : [www.jll.lu](http://www.jll.lu) | [www.jll.com](http://www.jll.com)

© Copyright 2020 Jones Lang Lasalle, IP, Inc. Non-contractual document.

**NEED INFORMATION ?  
OUR TEAM OF PROFESSIONALS  
IS AT YOUR SERVICE:**

**T : (+352) 46.45.40**  
**[residential.lux@jll.com](mailto:residential.lux@jll.com)**  
**[www.jllr.lu](http://www.jllr.lu)**