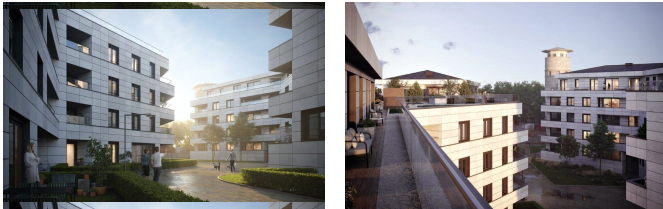


# RENAISSANCE 2 BEDROOM APARTMENT **LUXEMBOURG - BELAIR**

Réf: WAERPS-LUX200075



## 1 274 932 €

**Area: 105m<sup>2</sup>**  
**Availability : End 2023**

- Apartment
- 2 Bedroom(s)
- 1 Bathroom(s)
- Residents Parking, Underground Parking
- Ground Floor

An iconic site in Luxembourg, the project enjoys from a privileged setting and a prime location in a sought-after district of the Grand Duchy of Luxembourg. Apartment A03 located on the ground floor of block I consisting of 2 bedrooms. Living area: 94.59 m<sup>2</sup> weighted area: 105.41 m<sup>2</sup> Terrace 17.51 m<sup>2</sup> Price including tax 17% 1.324.932 € Price including tax 3% 1.274.932 € The prices is sold with 1 interior space included. All the apartments will have high standard finishes, triple glazing, large terraces and balconies with single-level exits, stone facade, letterbox and connected doors, home automation, alarm system, private green spaces Close amenities: supermarkets, restaurants, sports centres, hospitals. Mobility: motorway access, bus stop in front of the building, future tram route (planned for 2026). the prices at the head of the advertisement are understood 3% VAT included. The areas indicated in the header of the advertisement are weighted. The visuals are not contractual. Agency fees are the charge of the seller.



JLL Residential  
37, Rue du Puits Romain  
L-8070 Bertange

Whether you are looking to buy, sell or rent a residential property or a piece of land in Luxembourg, our entire team of experts will be delighted to use their experience to serve you. We are committed to providing solutions personalised to your needs. Know more about JLL : [www.jll.lu](http://www.jll.lu) | [www.jll.com](http://www.jll.com)

© Copyright 2020 Jones Lang Lasalle, IP, Inc. Non-contractual document.

**NEED INFORMATION ?  
OUR TEAM OF PROFESSIONALS  
IS AT YOUR SERVICE:**

**T : (+352) 46.45.40**  
**[residential.lux@jll.com](mailto:residential.lux@jll.com)**  
**[www.jllr.lu](http://www.jllr.lu)**